

STUDENT BOOKLET



PRIMARY STAGE 2 (YEARS 3-4)

EXPLORE AGRICULTURE!

Today at the Sydney Royal Easter Show, you'll dive into the amazing world of agriculture - the industry that feeds and clothes you every day. You'll discover where our food and clothing come from and meet the animals and plants that make it all possible.

Are you ready to begin?



SHOW MAP

A B C D E F G H I J K L M N O P Q R S T U V W X




Stars of the Show


Animal Walk


Toilets


Lost Persons

ACTIVITY 1

Let's get to know the incredible animals that work hard to provide us with food, clothing, and more!


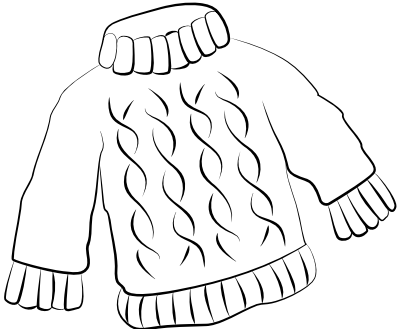
How to Complete the Profile Table:

1. Look at the picture of each animal in the table and try guess what the animal is.
2. Fill in each blank with details about the animal. Describe things like what they eat, where they live, and more!
But watch out - some sneaky plants might try to join in on this activity! Can you spot them trying to "act" like farm animals? Make a note of any plants that you find pretending to fit in!
3. At the end, draw a product that you use which comes from this animal.






HINT:
The first animal is completed to get you started

PROFILE TABLE

Animal	Information	Draw a product that we use which comes from this animal
	<p>I am a... (write the animal's name) Sheep</p> <p>I can live in... (describe the animal's habitat) big grassy fields where they can roam and stay together with their flock.</p> <p>I eat... (describe the animal's diet) grass, hay, and sometimes yummy plants from the ground.</p> <p>People use me for... (describe what products come from the animal) wool for clothes, milk for cheese, and sometimes even soft leather!</p>	




FARM ANIMAL PROFILES

PROFILE TABLE

Animal	Information	Draw a product that we use which comes from this animal
	<p>I am a...</p> <p>I can live in...</p> <p>I eat...</p> <p>People use me for...</p>	
	<p>I am a...</p> <p>I can live in...</p> <p>I eat...</p> <p>People use me for...</p>	
	<p>I am a...</p> <p>I can live in...</p> <p>I eat...</p> <p>People use me for...</p>	




FARM ANIMAL PROFILES

PROFILE TABLE

Animal	Information	Draw a product that we use which comes from this animal
	<p>I am a...</p> <p>I can live in...</p> <p>I eat...</p> <p>People use me for...</p>	
	<p>I am a...</p> <p>I can live in...</p> <p>I eat...</p> <p>People use me for...</p>	
	<p>I am a...</p> <p>I can live in...</p> <p>I eat...</p> <p>People use me for...</p>	

FARM ANIMAL PROFILES

PROFILE TABLE

Animal	Information	Draw a product that we use which comes from this animal
	<p>I am a...</p> <p>I can live in...</p> <p>I eat...</p> <p>People use me for...</p>	
	<p>I am a...</p> <p>I can live in...</p> <p>I eat...</p> <p>People use me for...</p>	
	<p>I am a...</p> <p>I can live in...</p> <p>I eat...</p> <p>People use me for...</p>	

ACTIVITY 2

The marketing team forgot to finish the special Sydney Royal Easter Show catalogue, and we need your help to get it ready for the High School Agriculture students.

Your Mission is to gather the missing details. These will include where the item can be found (pavilion and map reference); Where the product comes from – name of the plant or animal, even better the part of the plant or animal.

1. Grab Your Catalogue and Show map – This is your guide! Inside, you'll find sections with missing information. Your job is to explore the Show to fill in each blank.
2. Visit the Locations:
 - The Woolworths Fresh Food Dome: Head here to find food products like fruits, vegetables, dairy, and meat. Look for suppliers who provide these items and note where each one can be found.
 - The Art and Crafts Pavilion: Here you'll find items made from fibres like wool, cotton, and leather. Take note of any unique items and what plants or animals they come from.
 - The animal pavilions and the Woolworths Ag Discovery Pavilion – there are some extension products to find in here.



BONUS CHALLENGE:

Try to find a unique product made from an unexpected plant or animal and add it to the Fun Facts section in your catalogue!



Sydney Royal EASTER SHOW

2025 CATALOGUE

WHERE TO FIND?

FOOD PRODUCTS

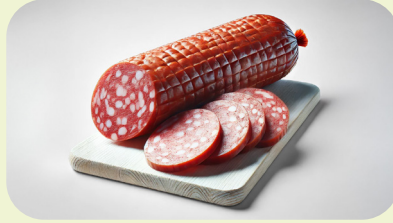


Product Name:

Where it comes from:

Pavilion:

Map Ref:



Product Name:

Where it comes from:

Pavilion:

Map Ref:



Product Name:

Where it comes from:

Pavilion:

Map Ref:



Product Name:

Where it comes from:

Pavilion:

Map Ref:



Product Name:

Where it comes from:

Pavilion:

Map Ref:

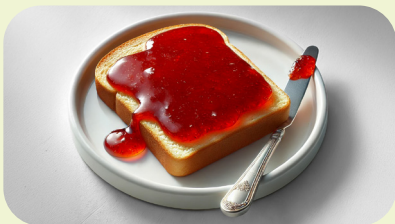


Product Name:

Where it comes from:

Pavilion:

Map Ref:



Product Name:

Where it comes from:

Pavilion:

Map Ref:

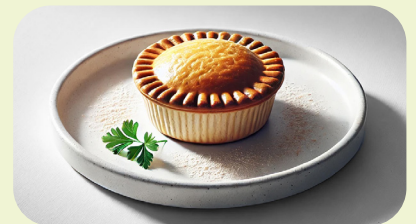


Product Name:

Where it comes from:

Pavilion:

Map Ref:



Product Name:

Where it comes from:

Pavilion:

Map Ref:

Sydney Royal EASTER SHOW

2025 CATALOGUE

WHERE TO FIND?

LEATHER & FIBER

LEATHER



Product Name:

Where it comes from:

Pavilion:

Map Ref:

WOOL



Product Name:

Where it comes from:

Pavilion:

Map Ref:

COTTON



Product Name:

Where it comes from:

Pavilion:

Map Ref:

STRAW



Product Name:

Where it comes from:

Pavilion:

Map Ref:

LEATHER



Product Name:

Where it comes from:

Pavilion:

Map Ref:

BAMBOO



Product Name:

Where it comes from:

Pavilion:

Map Ref:

RAW PRODUCTS



Product Name:

Where it comes from:

Pavilion:

Map Ref:



Product Name:

Where it comes from:

Pavilion:

Map Ref:

FUN FACT!

BONUS ACTIVITY

Stars of The Show

Get ready to meet the Stars of the Show! Use the animal pictures to track them down around the showgrounds. Can you figure out where they are and name a movie, TV show or book they're in? Let's see how many stars you can find!

Here's how to complete your Star Map:

1. Use your Show map located on page 2 to locate the farm animals
2. Fill in the questions and write down the map reference where you have found them



Animal Type: _____

Pavilion: _____

Show Map Coordinates: _____

Name a TV show, Movie or Book with this animal: _____

Fun Fact: _____



Animal Type: _____

Pavilion: _____

Show Map Coordinates: _____

Name a TV show, Movie or Book with this animal: _____

Fun Fact: _____



Animal Type: _____

Pavilion: _____

Show Map Coordinates: _____

Name a TV show, Movie or Book with this animal:

Fun Fact: _____



Animal Type: _____

Pavilion: _____

Show Map Coordinates: _____

Name a TV show, Movie or Book with this animal:

Fun Fact: _____



Animal Type: _____

Pavilion: _____

Show Map Coordinates: _____

Name a TV show, Movie or Book with this animal:

Fun Fact: _____



Animal Type: _____

Pavilion: _____

Show Map Coordinates: _____

Name a TV show, Movie or Book with this animal:

Fun Fact: _____



RAS EDUCATION

The RAS is dedicated to raising the standard of agricultural education at all stages of the experience and beyond through excursions, digital resources and curriculum linked programs for NSW.

Ag in a Box



Farm Days



Discover Ag



Easter Show

